
Program Purpose

The BMP Client Viewer was created to :

Provide a copy of the chart images and calculated readings for review by a BMP client in their own offices.

Functionality

Here is a list of some of the features of the BMP Client Viewer :

- Create a data file containing the chart calculations and a reference to the appropriate chart image.
- Extract only the chart images associated with this set of data.
- User interface will allow selection of a specific reading by Meter Id and Chart On Date as displayed in a list.
- User interface will allow viewing of the original chart image as well as the ability to overlay the interpreted trace.
- Both the chart image and the calculations will display together on the screen.

NOTE: When receiving multiple CDs, copy all contents of CDs 2+ to a shared network drive. You will need write permissions, contact your Systems Administrator for assistance. Contents of multiple disks can span 1GB+. This will be your shared network drive folder as referred to below. *Example:* <Network Drive>:\<Root Folder>

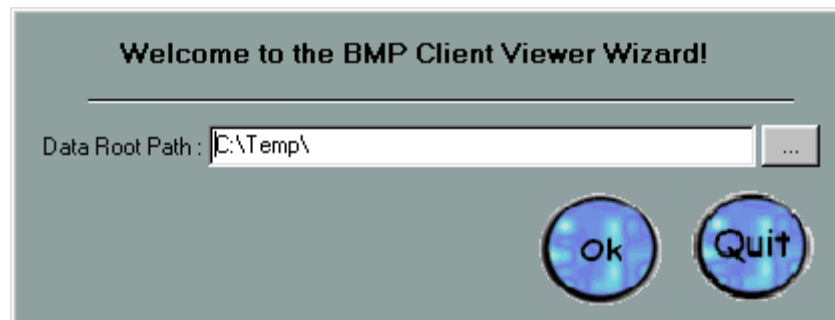
Instructions

Follow these steps to use the BMP Client Viewer :

- When the Viewer application starts, a copyright message requires an “Agree” response before the program will continue.



- The first time the BMP Client Viewer is installed and run you will get a screen that looks similar to the one below:



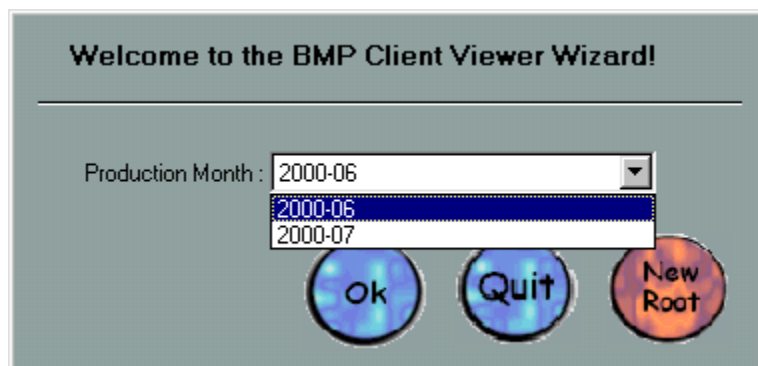
- The location that should be entered above should be the root at which all of the production month folders are copied into.

Example: <Network Drive>:\<Root Folder>

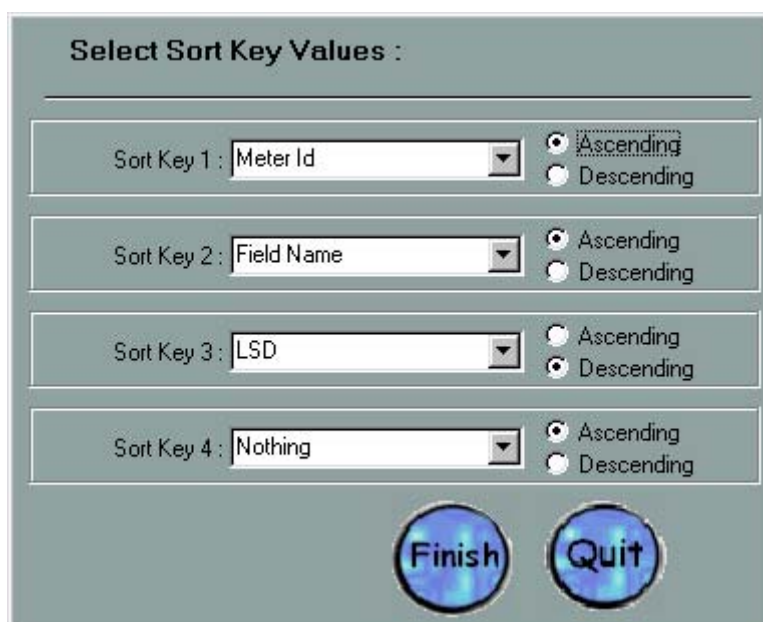
Example: D:\Data

(Your network drive will be the drive at which the data is located and the root folder will be the folder that contains the production month folders.)

- After selecting the correct root you should see a screen similar to the one below. Select the correct year and production month to view. The format of the production months are YYYY-MM.

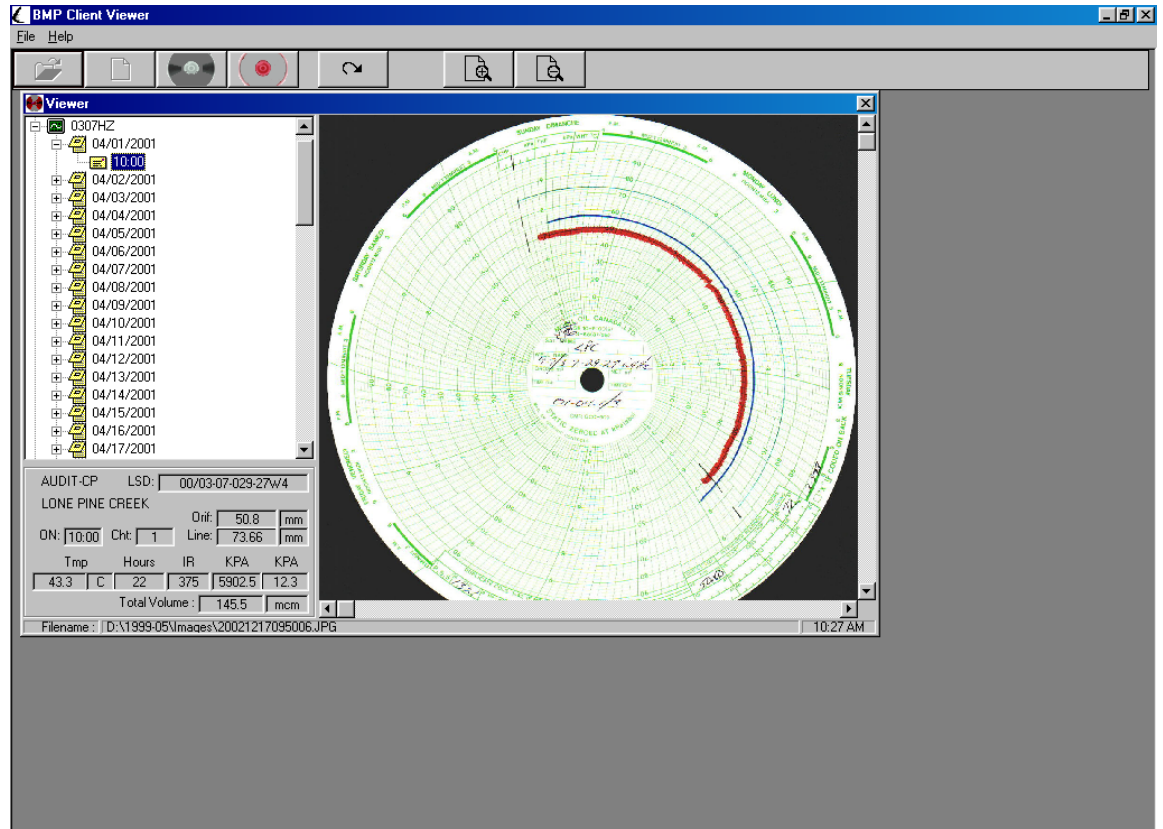


- Select your Sort Order Keys – Meter must be one key. You can select between 1 and 4 different sort keys.



- Select “Finish” and the BMP Client Viewer will display on your screen.

- The left side of the screen contains a listing of the records in this data file. In this example, the client GULF contains records for five different measurement points. The individual wells are identified by their BMP Meter Id.
- To view the LSD for each, click on the “+” beside the Meter Id.



- Continue to drill down by clicking the “+” to view the Chart Start Date and Start Time.
- Display the corresponding chart image by clicking on the Start Time.
- The lower left portion of the screen displays the readings calculated for this breakout. This display is similar to the BMP chart backdrop.
- Buttons above the image allow the display to zoom in or out.
- The red disk is used to overlay the interpreted trace onto the original image. The black disk will bring back the original image without the overlay.



MODULE MODULE MODULE MODULE MODULE MODULE
MODULE MODULE MODULE MODULE MODULE MODULE
MODULE MODULE MODULE MODULE MODULE MODULE
MODULE MODULE MODULE MODULE MODULE MODULE
MODULE MODULE MODULE MODULE MODULE MODULE
MODULE MODULE MODULE MODULE MODULE MODULE
MODULE MODULE MODULE MODULE MODULE MODULE
MODULE MODULE MODULE MODULE MODULE MODULE
MODULE MODULE MODULE MODULE MODULE MODULE
MODULE MODULE MODULE MODULE MODULE MODULE
MODULE MODULE MODULE MODULE MODULE MODULE
MODULE MODULE MODULE MODULE MODULE MODULE
MODULE MODULE MODULE MODULE MODULE MODULE
MODULE MODULE MODULE MODULE MODULE MODULE
MODULE MODULE MODULE MODULE MODULE MODULE



Printed in Canada
on Recycled Paper